

# February Progress Monitoring Presentation

## Agenda

- *Every Student: Accelerating Proven Practices High School Opportunities / Targeted Priority Postsecondary Success*

# Our Theory of Action | Together We Rise

*Every Student has a rigorous, joyful, and equitable daily learning experience.*

**Strategies: How We Get There**

**Accelerating Proven Practices**

**High School Opportunities:** Expand access to advanced coursework, including Advanced Placement classes, International Baccalaureate programming, **dual credit and dual enrollment opportunities**, military academies, **job shadowing**, and **work-based learning opportunities**.

# Our Theory of Action | Together We Rise

*Every Student has a rigorous, joyful, and equitable daily learning experience.*

## Strategies: How We Get There

### Targeted Priorities: Postsecondary Success

- Ensure all high school students have access to high-quality **advanced course options** including AP, IB, early college, Career and Technical Education (CTE), and JROTC by conducting annual equity reviews and helping schools expand offerings that increase the # of students earning credits towards college completion or career.
- Expand access in communities across the city to high-quality, **career-connected education** pathways that prepare students for careers with family-sustaining wages, including CTE, work-based learning, City Colleges Model Pathways, and citywide career programs. Align CTE programs to the Illinois State Board of Education's College and Career Pathway Endorsements (CCPE) to ensure students in CTE programs can earn advanced career credentials in high-growth, high-wage industries.
- Ensure **career advising and exposure** begins in middle school so all students in grades 6–12 have access to high-quality advising and career exposure activities.
- Increase the percent of high school graduates earning **advanced course credits and career credentials** from 49% to 70%.
- 100% of schools serving 6th-12th grade students will use CPS Success Bound **advising curriculum** which centers on career exploration, high school selection, and postsecondary access to drive completion of Individual Learning Plans in SchoolLinks.
- Develop a **middle school strategy and plan** by engaging stakeholders and building on the current initiatives like CPS Success Bound, To and Through, algebra hubs, and high school course offerings for middle school students.

# Quick Look: Postsecondary Success

## When Conditions are In Place, Students Experience:

### ***6th-8th Grade: Middle Grades Specific***

- HS Selection advising using the same postsecondary advising language
- Course advising and early access to high school prerequisite courses for early college/IB/AP
- Work-Based Learning (WBL) opportunities focus on career awareness and exposure

### ***6th-12th Grade: Across the Spectrum***

- CPS Success Bound postsecondary instruction
- Postsecondary exposure visits & experiences (Career Fairs, Campus Visits etc)
- SchoolLinks platform for Career Interest Inventories & key postsecondary tasks (called ILPs)

### ***9th-12th Grade: High School Specific***

- Rigorous course advising and targeted postsecondary advising for pathway selection & access
- Access and attainment of early college/CTE/IB/AP/Advanced JROTC
- Career experience opportunities: Industry certs, CPFTA, Jumpstart to Jobs, Internships, WBL
- Wholistic supports for postsecondary action steps (Fin Aid, LPS, Applications, etc. called KPI's)
- WBL connect students to careers through a continuum of experiences that intensify throughout the HS journey, inclusive of Summer internships

### ***13th & 14th Year: Alumni Support Initiative***

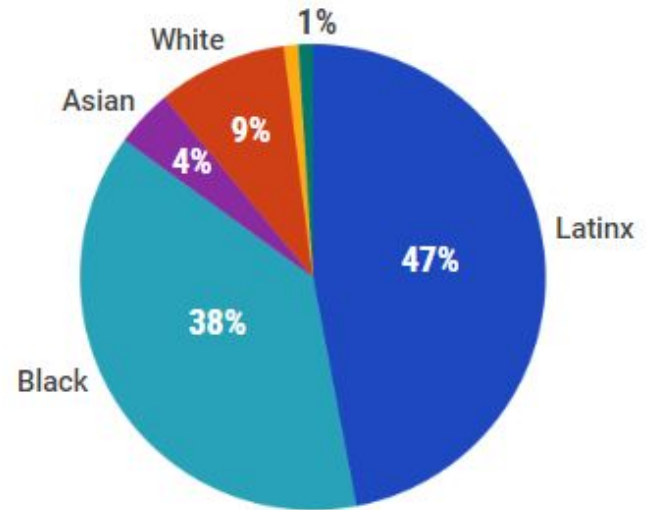
- First & second year postsecondary advising, resources & supports from HS Alumni Coordinators

# Postsecondary Success

## 5 Year Visionary Goal

Every student will earn the equivalent of a semester of college credits or an advanced career credential before high school graduation.

**SY24**  
**15+ CREDITS ATTAINMENT BY RACE**



Early College Data shows almost no racial opportunity gap.

## SY24 Credentials that meet ECCC

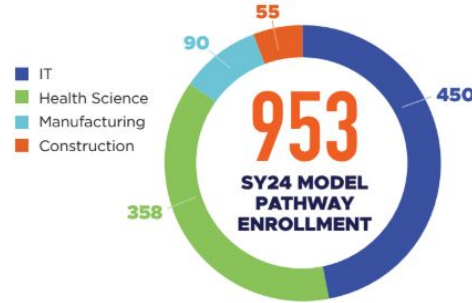
Helps students connect their interests to future goals with exposure to a variety of careers and industries.



- Latinx
- Black
- White
- Multi
- Asian
- Hawaiian/Pacific Islander
- American Indian
- N/A

## SY24 Students in Model Pathway Enrollment

Leverages partnerships with City Colleges of Chicago and other postsecondary institutions to increase readiness and accelerate degree completion in high-demand fields.



- IT
- Health Science
- Manufacturing
- Construction

## SY24 Early College Credits Earned

Provides countless opportunities to earn college credit while in high school, saving students and families time and money.

**5,500+**  
District graduates earned nearly  
**50,000**  
TOTAL CREDITS

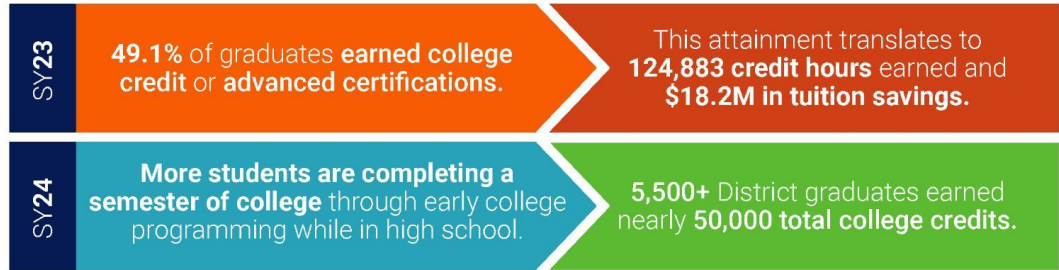
## Summer Internships

Bridges the gap between academic learning and real-life experience, better preparing students for success beyond the classroom.

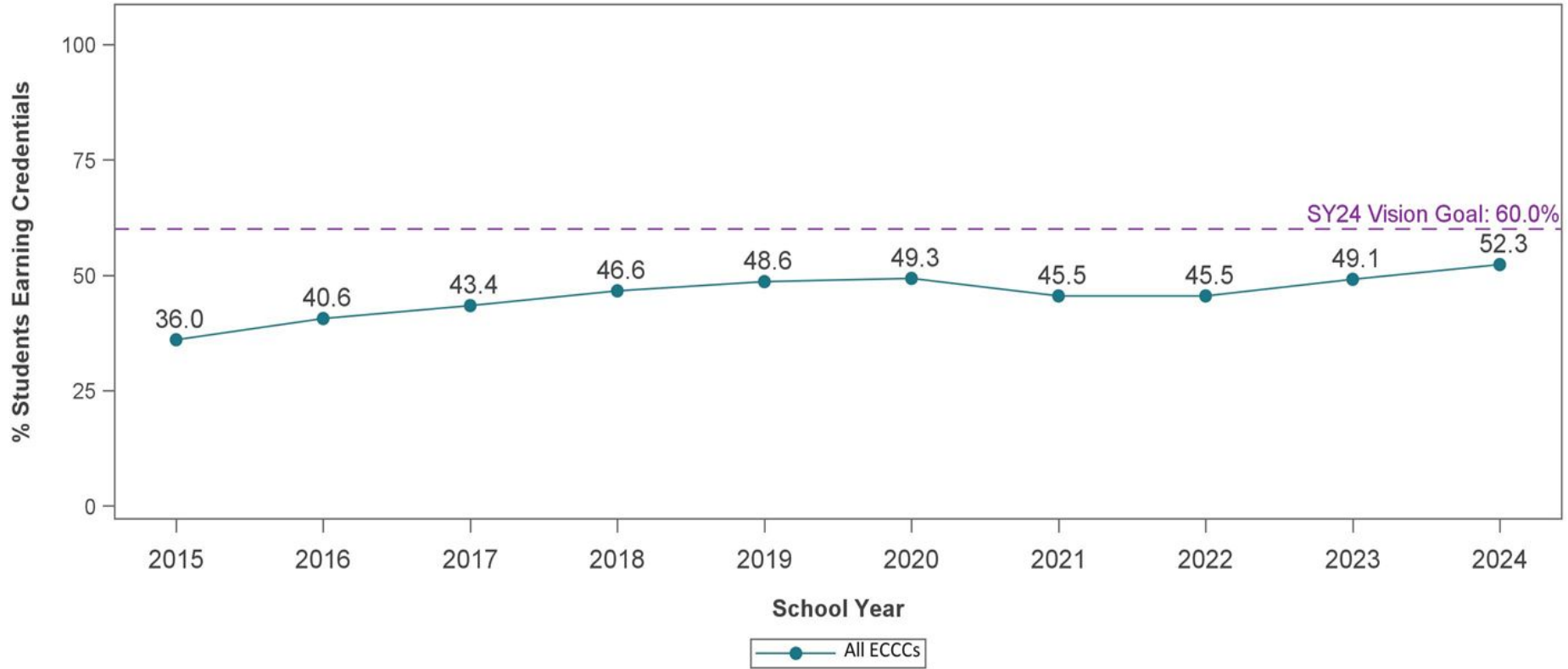


- Latinx
- Black
- White
- Multi
- Asian
- Hawaiian/Pacific Islander
- American Indian
- N/A

## Access to Postsecondary Opportunities



# Early College & Career Credential Attainment Rate: Progress to Vision Goal



# College and Career Pathway Endorsement



A **statewide movement** to equip students with a multi-faceted set of knowledge, skills, and abilities that allow them to meet the challenges of postsecondary education and career and live healthy, productive lives.

The [Postsecondary and Workforce Readiness Act](#) includes a process for school districts to award [College and Career Pathway Endorsements](#) to high school graduates.

## Students earn endorsements by completing:

- individualized learning plans in gr 9-12; AND
- career-focused instructional sequence; AND
- professional learning opportunities; AND
- academic readiness.



# Early College Progress

We're on track to have the largest Early College graduated class ever! Pending Spring enrollment and completion data is finalized, we anticipate 1+, 15+, and 30+ credit earner numbers will grow.

	Class of 2025 (In progress)	Class of 2024
1+ Credits	6093	5922
15+ Credits	864	835
30+ Credits	232	217
Associate Degree	200*	144

# Postsecondary Preparation & Planning

Personality Cluster Career Major Results

Personality Match

You're like the **Craftsman**

Tolerant Flexible Observant  
Practical Analytical Logical Quiet  
Reserved Daring

Career Goal

**Software Development**

Other careers in Science, Technology, Engineering, and Mathematics

Major Goal

**Mathematics**

Colleges that offer this major

Here's what's happening on SchoolLinks

**To Do List** My Team Surveys & forms

0 Due within the Next Four Weeks!

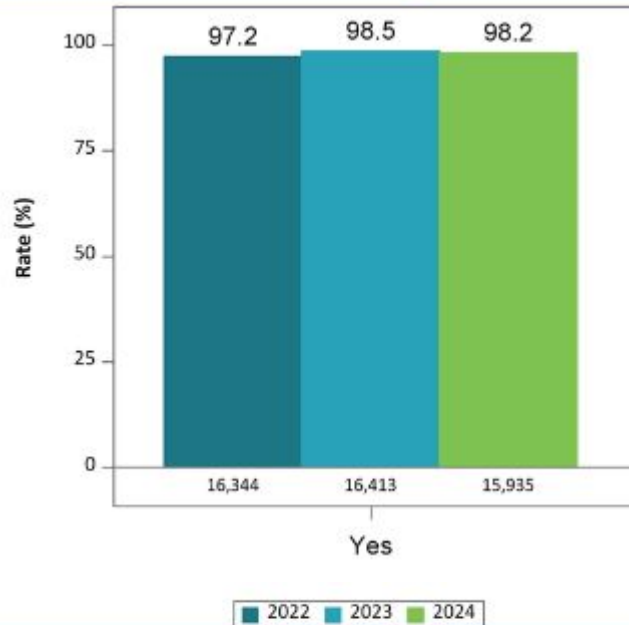
No To Dos due within the next four weeks!

May 2023

22nd	Create a Balanced Final List	Not Done
22nd	Update Profile and Resume	Not Done
22nd	Favorite Colleges	Not Done
22nd	Explore Opportunities	Not Done

No More To Dos Coming Up This Year!

## Overall Percent Completing Learn.Plan.Succeed.

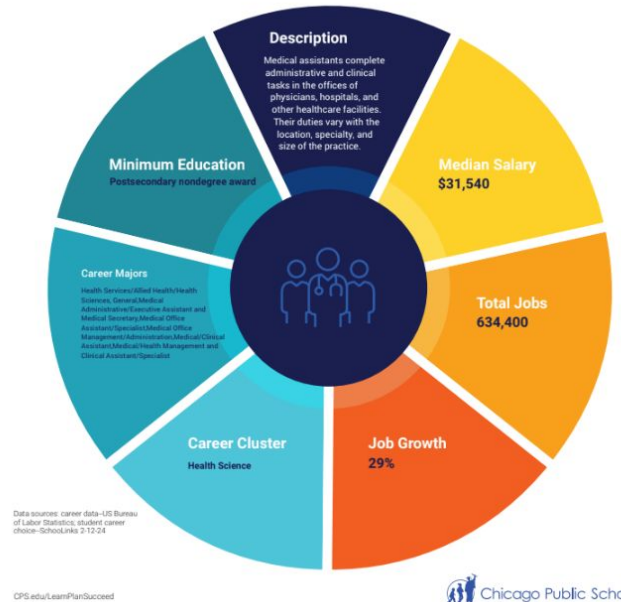


LEARN.PLAN.  
SUCCEED.

### Career Opportunities

Each student's career path is unique. Below you will find some information about the career you chose as your current pathway focus as part of the onboarding process in SchoolLinks. If you have not yet logged into SchoolLinks, use your CPS SchoolLinks account ([cps.edu/SchoolLinks](https://cps.edu/SchoolLinks)) to complete the career interest inventories that have been assigned to you. If you have not chosen a career yet in SchoolLinks, for the purpose of this report, the information here reflects Business Management as one of the leading career opportunities in Illinois with thousands of yearly job openings.

### Career: Medical Assistance



# Percent of Students Enrolling & Persisting in College

